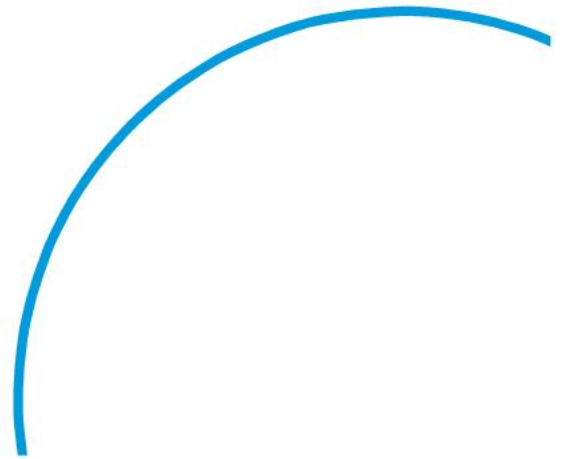
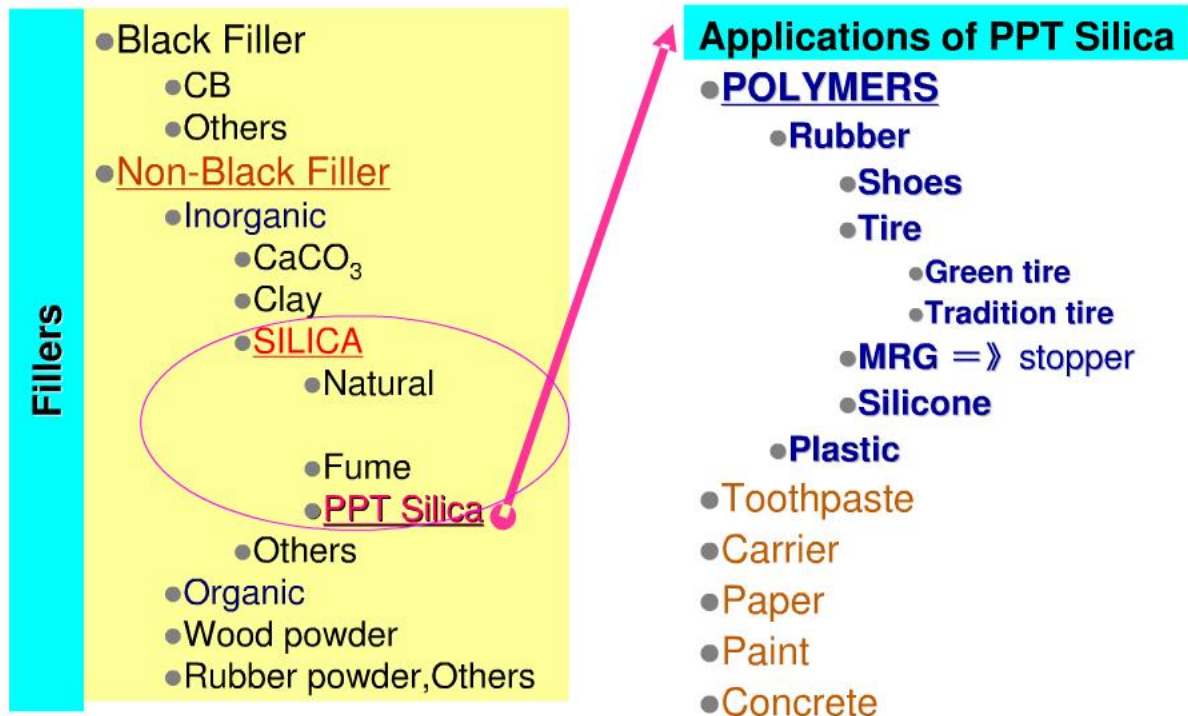


*Oct. 2010*

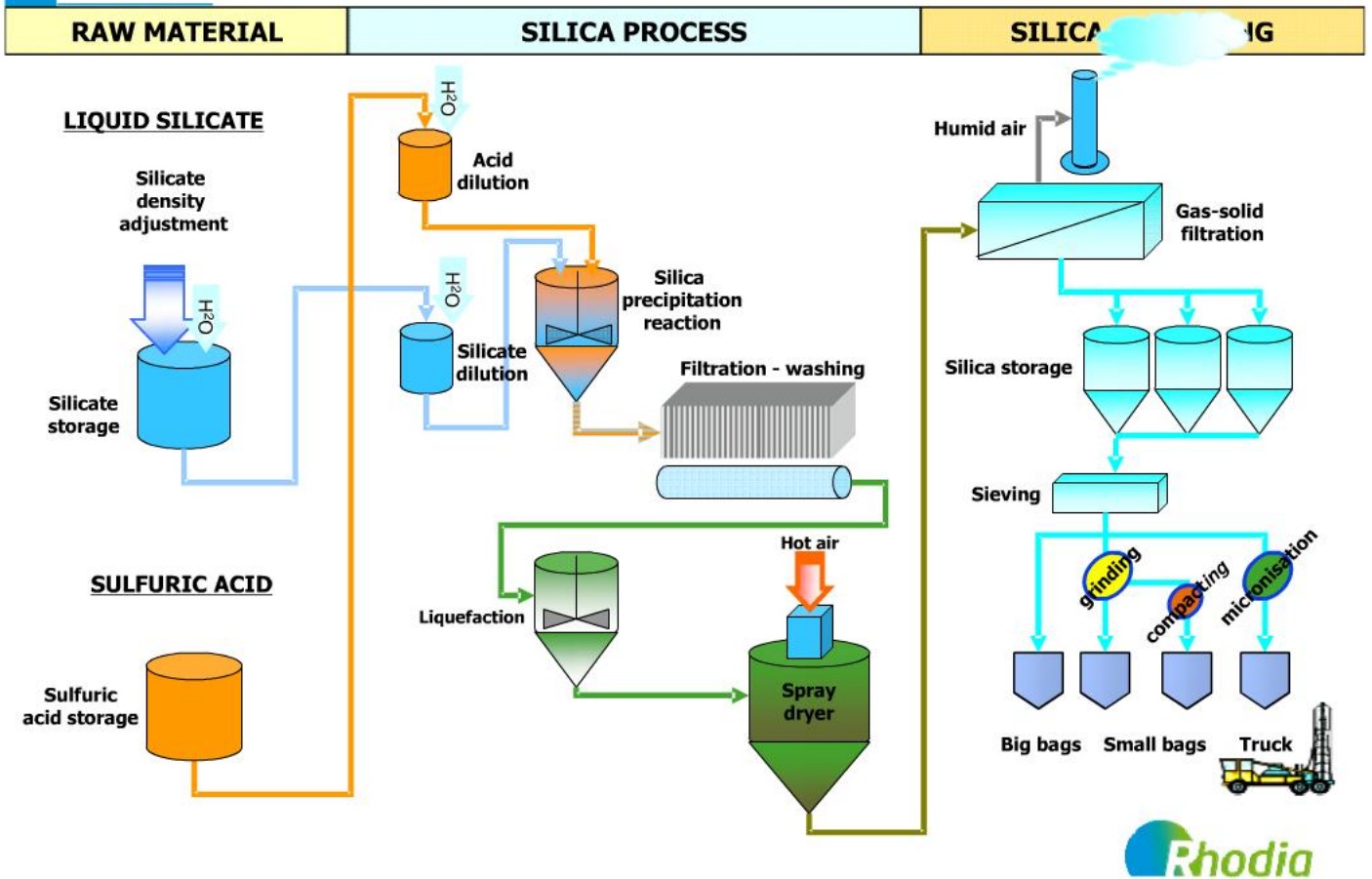
# Silica application in MRG



# Filler for polymer application



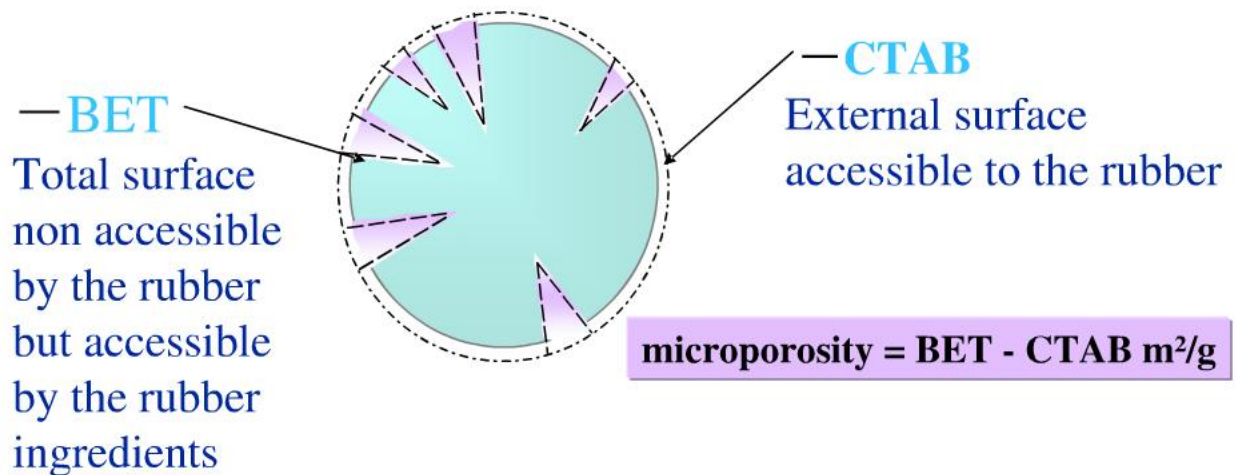
# Silica — A simple chemistry but complex production process



# Silica – Basic Characteristics

- **Specific Surface Area**

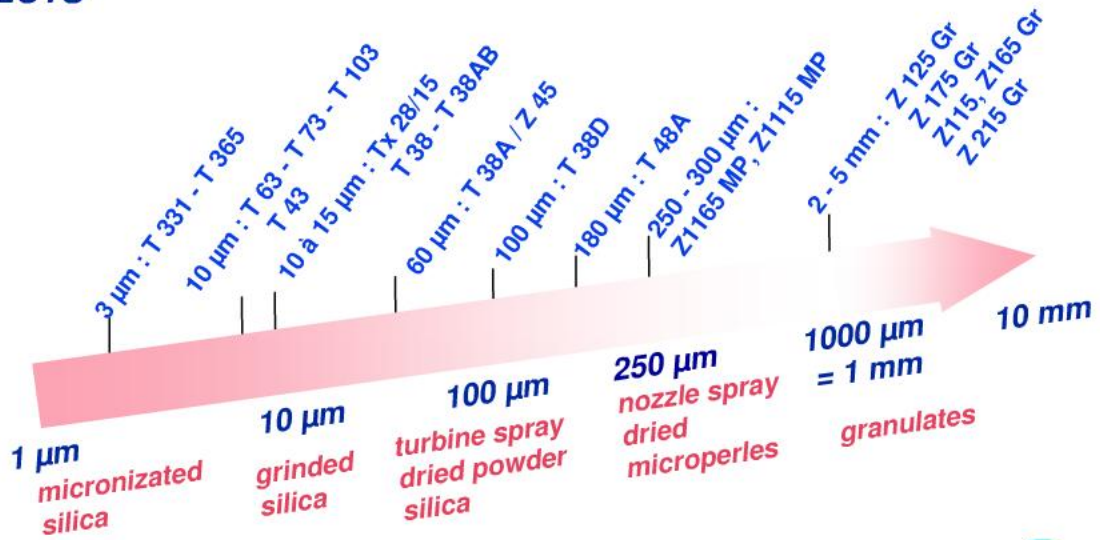
**ESPECIALLY FOR RUBBER, THE SPECIFIC SURFACE CAN BE THE EXTERNAL SURFACE (CTAB) OR THE TOTAL SURFACE OF THE SILICA (BET)**



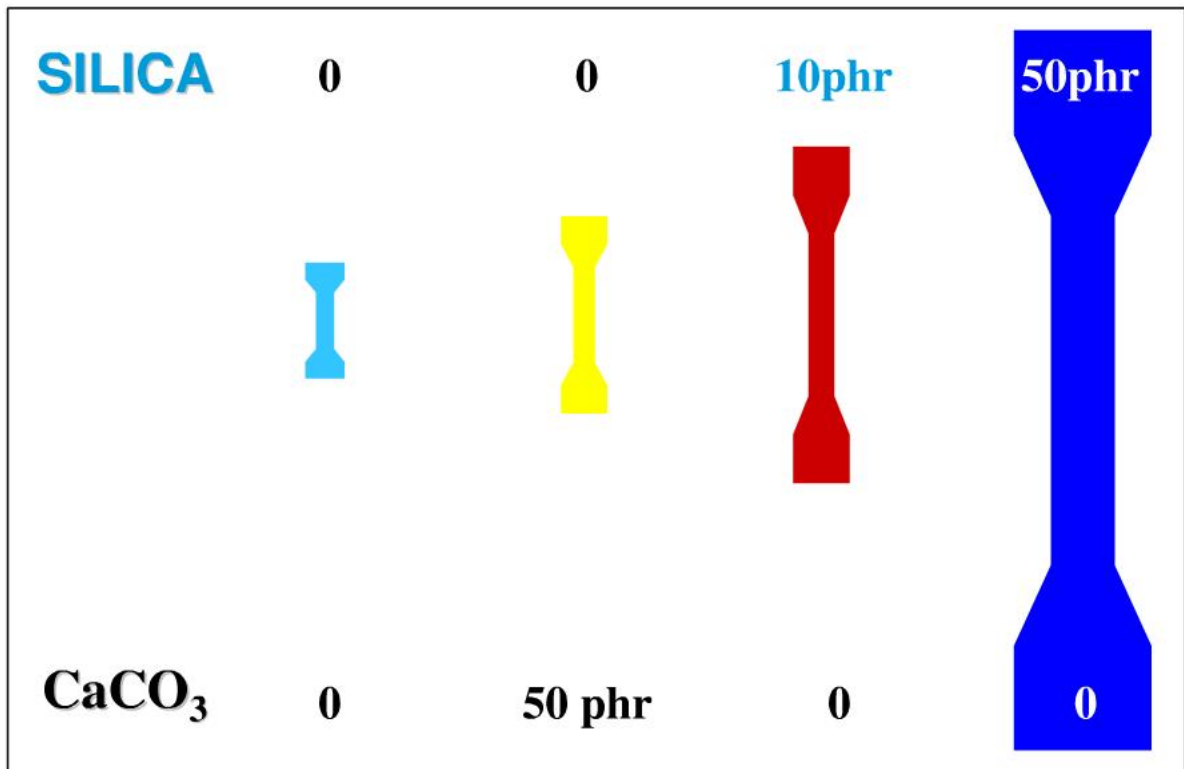
# Silica – Basic Characteristics

- **Granulometry**

**AFTER THE FINAL STEP (atomization, grinding, compacting, micronization) ;  
PRECIPITATED SILICA SHOWS DIFFERENT PRESENTATION WITH VARIOUS  
OBJECTS**



# Silica – Reinforcement for Polymer



# Silica – Application in MRG

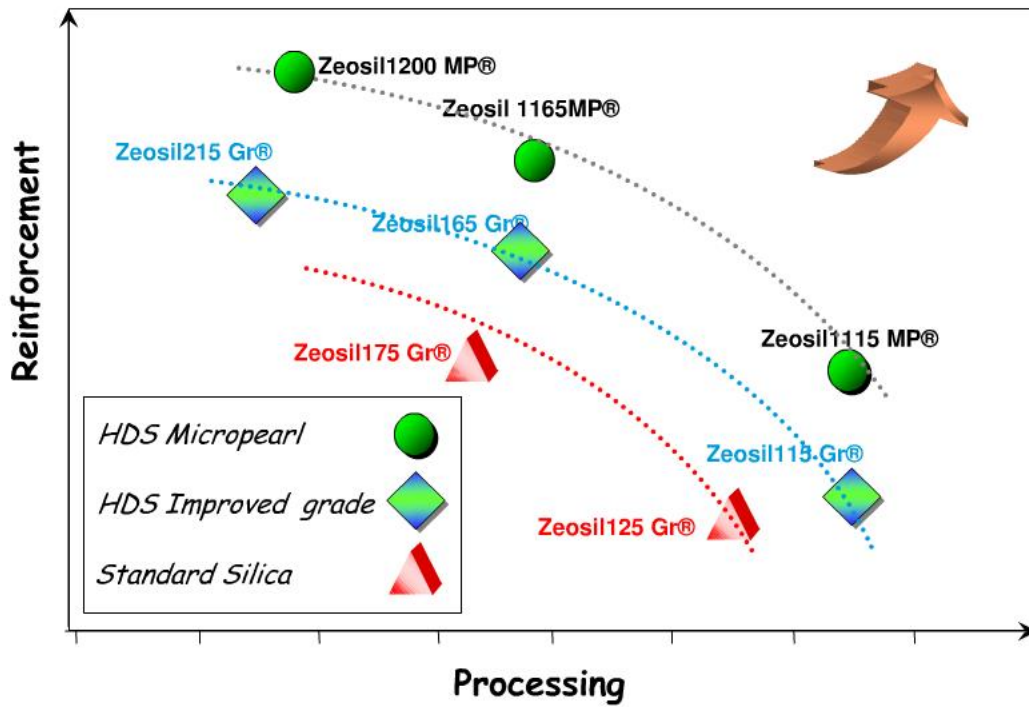
Rhodia is providing full silica range for rubber application:





# Silica – Application in MRG

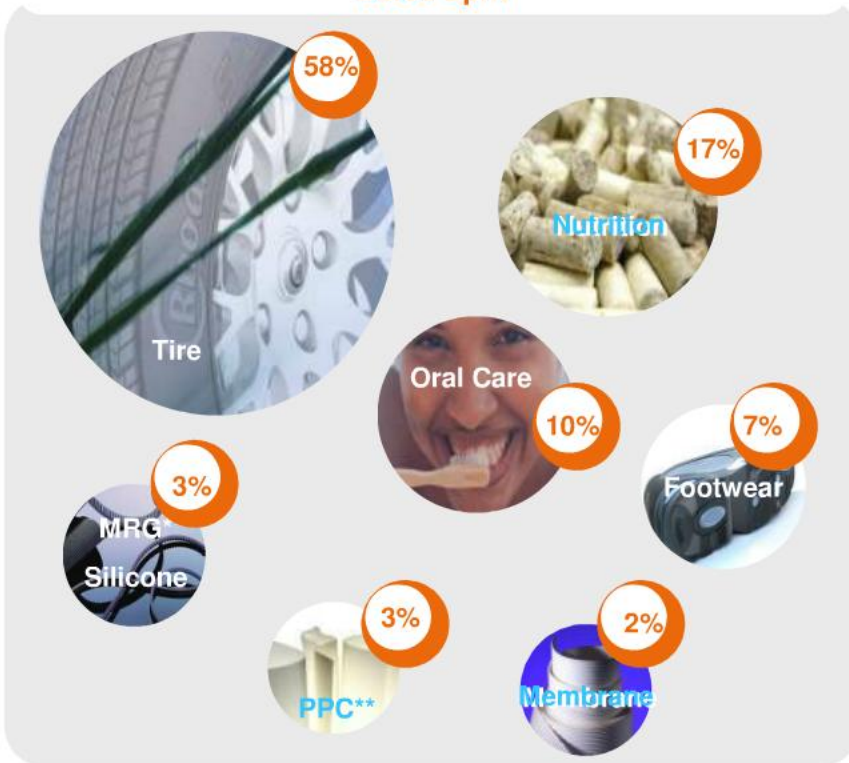
## Rhodia's Silica Range (Reinforcement vs Processing)





# Market of Rhodia Silica

## Sales split



\* Manufactured Rubber Goods

\*\* Paper, Paint, Construction

HPS Global Market Volume  
2007

330 kT

Average global Growth

10%

HPS WW in 2015

690 kT

Rhodia HPS WW Market Share

60%



# A WW presence to serve our customers



**Thank you**

